



Italian Openings & Automation

SINCE 1954

Automated roller shutter and outside curtains

TUBY



Operatore per tapparelle e tende esterne dotato di fincorsa elettrici e regolabili.

Opérateur pour volets roulants et stores extérieurs équipé des fin de courses électriques.

Roller shutter and external blinds motor equipped with limit switches.

Operador para persianas y estores exteriores equipadas con final de carrera.



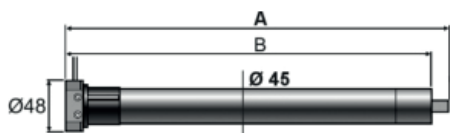
ISO 9001:2008



TECHNICAL DATA

	TUBY 45S-20 (43303/001)	TUBY 45S-30 (43303/002)	TUBY 45S-50 (43303/003)
Alimentazione / Power supply / Alimentation	230 Vac 50/60 Hz		
Assorbimento / Current / Consommation à vide	0,75 A	0,90 A	1,2 A
Potenza assorbita / Absorbed power / Puissance moteur	168 W	203 W	262 W
Protezione / Protection IP / Protection IP	44		
Spinta max. / Max. thrust / Poussee max.	20 Nm	30 Nm	50 Nm
Giri min. / Rpm / Vitesse de rotation	15	15	12
Diametro motore / Motor diameter / Diamètre du moteur	Ø 45 mm		

DIMENSIONS



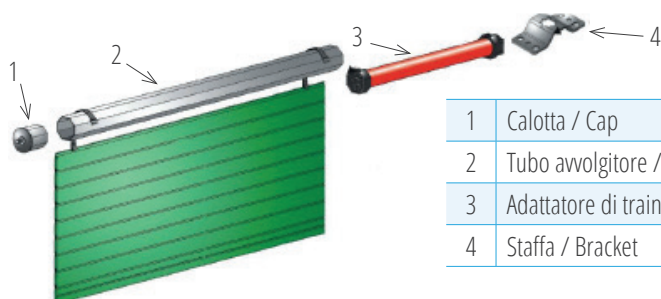
Mod.	A	B	Ø Octagonal tube	Max. weight lift
	mm	mm	mm	Kg
Tuby 45S-20	454	148	60	35
Tuby 45S-30	525	488	60	55
Tuby 45S-50	535	497	60	88

CONTROL UNIT

Control unit with radio receiver 433 Mhz:

- EQLRS2102 (1 motor)
- EQ2218 (4 motors)

STANDARD LAYOUT



1	Calotta / Cap
2	Tubo avvolgitore / Roller tube
3	Adattatore di traino / Towing adapter
4	Staffa / Bracket

ACCESSORIES INCLUDED



Staffa supporto perno quadro / Support bracket with square pin



Adattatori di traino / Towing adapter



Chiave regolazioni / Adjustment key

ATTENTION

Installare i dispositivi previsti dalle norme vigenti. I prodotti sono corredati di libretto avvertenze e istruzioni montaggio. I dati sono indicativi e possono essere variati senza preavviso.

Install the safety devices following the standard. The products are accompanied by the advertisement and installation maintenance hand-book. This data are indicative and can be changed without notice.

Installer les dispositifs de sécurité prévus par le normes. Les produits sont accompagnés d'un carnet d'avertissement et des instruction de montage. Les données techniques sont indicatives et peuvent être modifiées sans aucun préavis.

Instale los dispositivos previstos por las normas vigentes. Los productos tienen incluido folleto explicativo e instrucción de montaje. Las informaciones pueden variar sin aviso.

www.casit-italy.com/en/download



Italian Openings & Automation

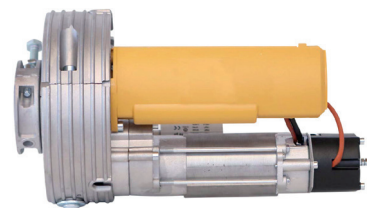
SINCE 1954

Automated shutters

ROLL



- **Automazione serrande per negozi e centri commerciali.**
Motore a asincrono con fincorsa e regolazione di salita integrati.
- **Shutters' automation for shops and shopping centers.**
Asynchronous motor with limit switches and setting up integrated.
- **Automatisation de volets pour magasins et centres commerciaux.**
Moteur asynchrone avec fin de course et réglage intégré.
- **Automatización de persianas para tiendas y centros comerciales.**
Motor asíncrono con interruptores de límite y configuración integrada.



ISO 9001:2008



Made in Italy

TECHNICAL DATA

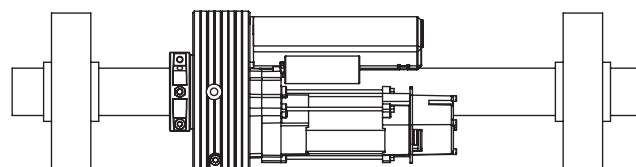
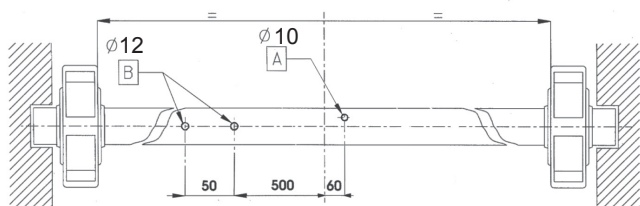
	60/200-FR K160	60/200-2M-FR K300	76/240-2M-FR K300
Alimentazione / Power supply / Alimentation	230 Vac 50/60 Hz		
Assorbimento / Current / Consommation à vide	2 A	2 × 2,8 A	2 × 2,8 A
Potenza assorbita / Absorbed power / Puissance moteur	600 W	2 × 600 W	
Motore elettrico / Electric motor / Moteur électrique	4-pole Asynchronous, 1400 Rpm	2 × 4-pole Asynchronous, 1400 Rpm	
Condensatore / Condenser / Condensateur	18 µF	40 µF	
Forza di sollevamento / Lifting power / Force de levage	160 Kg***	300 Kg***	
Giri min. / Rpm / Vitesse de rotation	10		
Diametro albero serranda / Shutter tube diameter / Diamètre du tube volet	∅ 48 mm*	∅ 60 mm	∅ 76 mm
Diametro corona motore / Crown diameter / Diamètre couronne moteur	200/220 mm**	200/220 mm**	240 mm
Peso motoriduttore / Motor weight / Poids du moteur	7 Kg	11 Kg	13 Kg
Temp. esercizio / Working temp. / Temp. de fonctionnement	Min -20 °C / Max +80 °C		
Dimensioni motoriduttore / Motor dimension / Dimension du moteur	200/220 × 320 mm		240 × 320 mm
Altezza serranda max. / Shutter max. height / Hauteur max volet	8 mt		
Termoprotezione / Thermal protection / Protection thermique	150 °C		

* In presence of tube shutter 48mms (1,5") use the appropriate plastic reduction.

** In presence of spring boxes diameter 220 mms and 280 mms use the appropriate adapters.

*** The lifting power must be intended with motor mounted on rolling shutter compensated with springs.

DIMENSIONS



AF0037/ML - III/17

